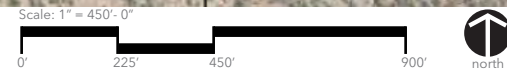
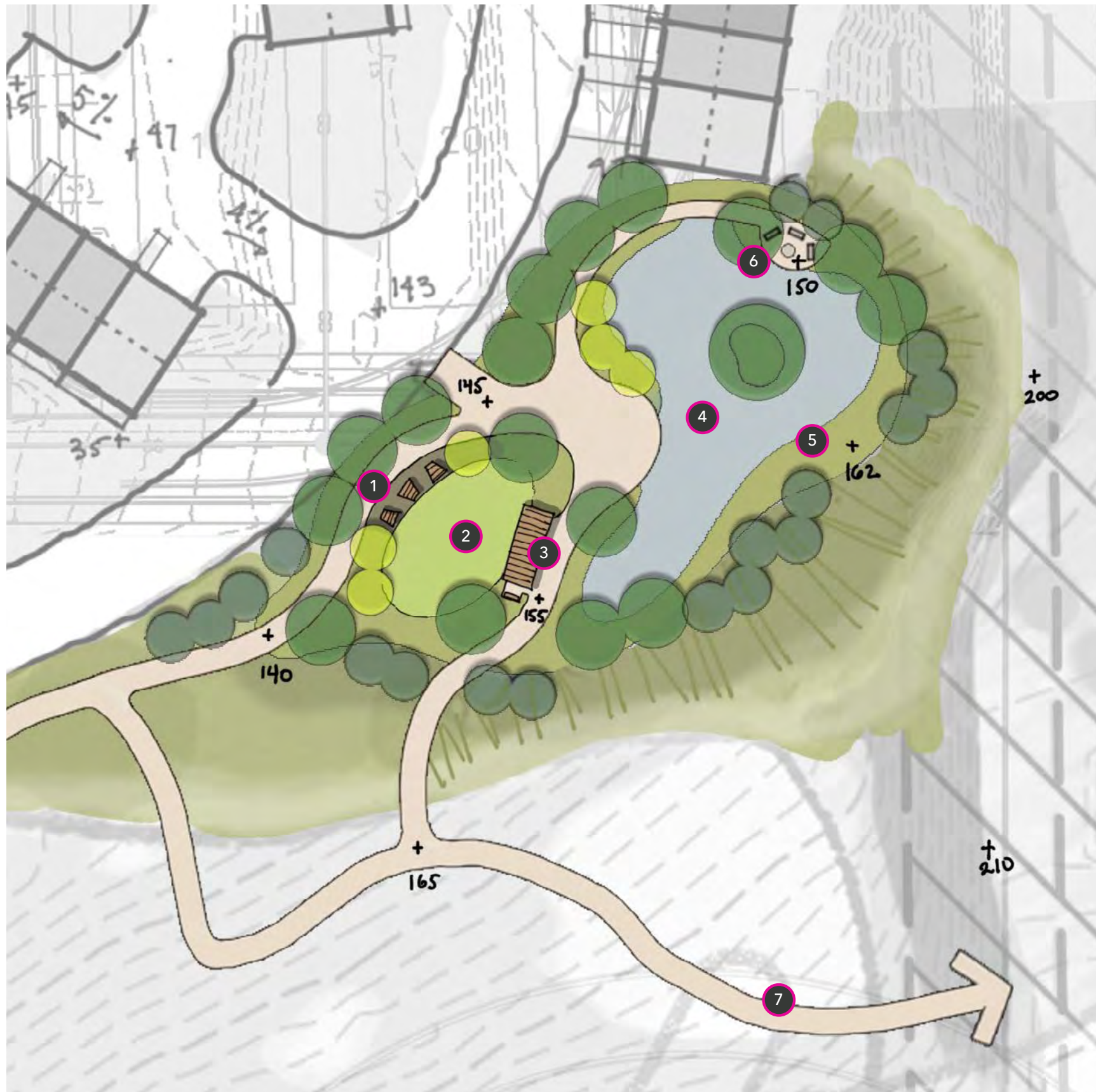


- FR FOR-RENT AMENITY**  
Open gathering space, water splash pad, community pool, hot tub, bbq area(s), community garden, club house
- CP COMMUNITY PARKS**  
Gathering overlook, view telescopes, open play fields, active interpretive play features, nature play, passive areas, community social opportunities
- AMP AMPHITHEATER PARK**  
Amphitheater, gathering overlook, view telescopes, passive areas, community social opportunities
- CG COMMUNITY GARDEN + ORCHARD**  
Community plots, demonstration plantings, maintenance shed and materials, educational programs, historic orchard
- IA INTERPRETIVE AREA**  
passive trails and spaces, educational signage and teaching areas for planting, ecology, and wildlife
- MU MIXED USE PLAZA**  
Civic plaza space, food truck parking and hook ups, on-street dining areas, seating, shade structures and misters, public art
- AP POCKET PARK - ACTIVE PLAY**  
active play structures, benches, shade, open play lawn, fitness elements, dog station, pickleball or other courts
- PP POCKET PARK - PASSIVE PLAY**  
Open natural areas, benches, small open green, dog station
- TH TRAIL HEADS**  
Open space trail, benches, dog stations, bike repair stations



NOT FOR REGULATORY APPROVAL, PERMITTING, OR CONSTRUCTION



KEY MAP

Legend

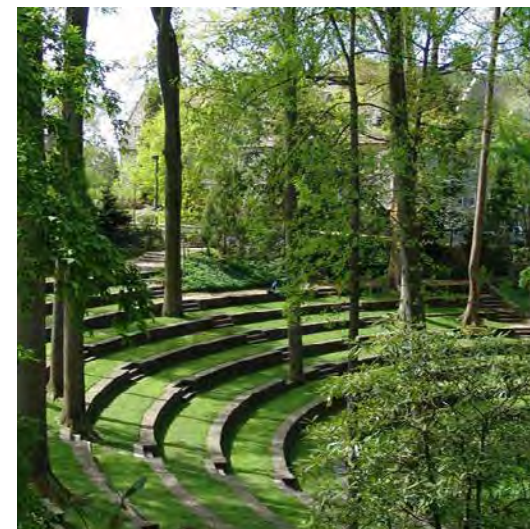
- 1 Sculptural Seating Area
- 2 Lawn
- 3 Picnic Structure and Grill
- 4 Nature Play
- 5 Embankment Slides
- 6 Seating Area
- 7 Path to Amphitheater



NOT FOR REGULATORY APPROVAL, PERMITTING, OR CONSTRUCTION



NOT FOR REGULATORY APPROVAL, PERMITTING, OR CONSTRUCTION



KEY MAP

Legend

- 1 Path to Vistas Amenity Area
- 2 Raised Planter
- 3 Wood Shade Structure
- 4 Stage
- 5 Terraced Seating
- 6 Concessions/Ticketing Area
- 7 View Terrace
- 8 Parking
- 9 Overflow Parking





KEY MAP

Legend

- 1 Community Building
- 2 Brewery
- 3 Boutique Retail or F+B
- 4 Outdoor Seating
- 5 Grand Staircase
- 6 Plaza with Street Clearance
- 7 Parking
- 8 Connection to Beacon Hill Events parking lot



NOT FOR REGULATORY APPROVAL, PERMITTING, OR CONSTRUCTION